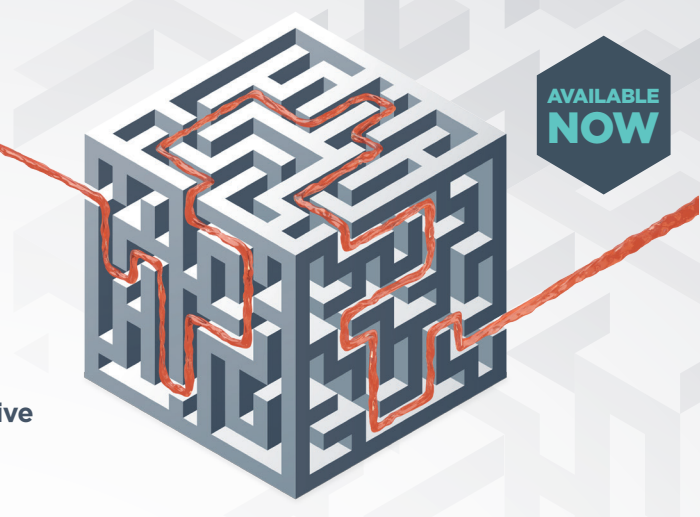


FIND THEIR PERSONALISED PATH WITH LIQUID BIOPSY

See a way forward for all patients with solid tumours – using FoundationOne®Liquid CDx, our **FDA-approved liquid biopsy** comprehensive genomic profiling service, as a **minimally-invasive** option, **alternative or complementary** to FoundationOne®CDx at **optimal times beneficial to their treatment journey**.¹⁻³



Our highly accurate and extensively validated, next-generation liquid biopsy genomic profiling service provides prognostic, diagnostic and predictive insights that inform research or treatment decisions for individual patients across all solid tumours.^{2,3}



Comprehensive panel

Reports all four main classes of genomic alterations* in >300+ cancer-relevant genes and reports MSI[†], bTMB and Tumour Fraction[‡]



High accuracy

High sensitivity and specificity[§] for key genomic alterations, MSI[†] and bTMB across all solid tumours[‡]



Extensively validated

Based on an analytically and clinically validated FDA-approved comprehensive platform, and bioinformatics workflow^{¶1-6}



Comprehensive report

Clear, in-depth report provides insights on the genomic profile of your patient to support personalised clinical decisions^{2,3}

Quick and convenient single blood draw and short turnaround time enable faster treatment decisions^{2,7-10}



Two tubes of whole blood (8.5 mL each)

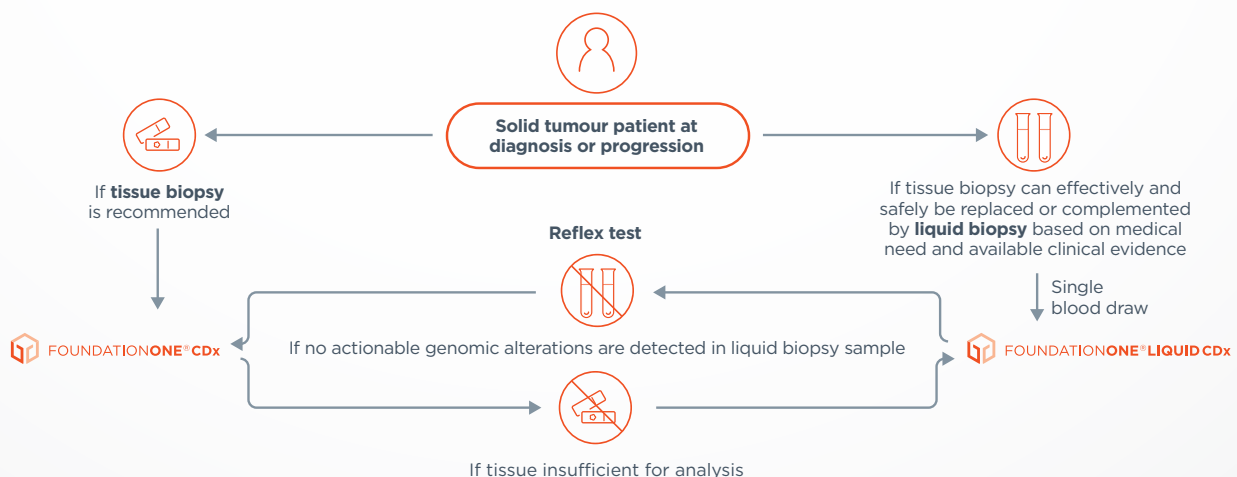
Quick and convenient single blood draw helps avoid invasive biopsies and enables faster treatment decisions^{2,7-11}



Quick turnaround time

Less than 2 weeks turnaround time from receipt of sample at our laboratory to report²

Suitable for all solid tumours based on your patient's profile and the available clinical evidence^{2,3,9,10}



*Base substitutions, insertions or deletions, copy number alterations and gene rearrangements.

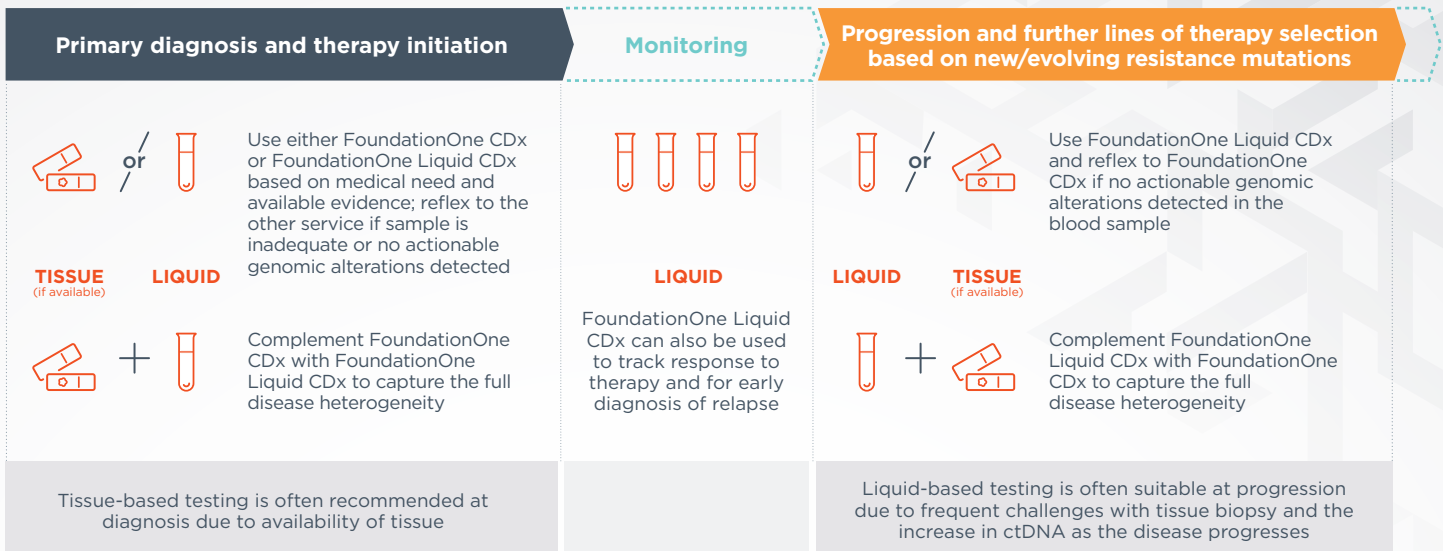
[†]309 genes with complete coding exonic coverage, 15 genes with select intronic or non-coding regions only.

[‡]FoundationOne Liquid CDx reports MSI-H status.

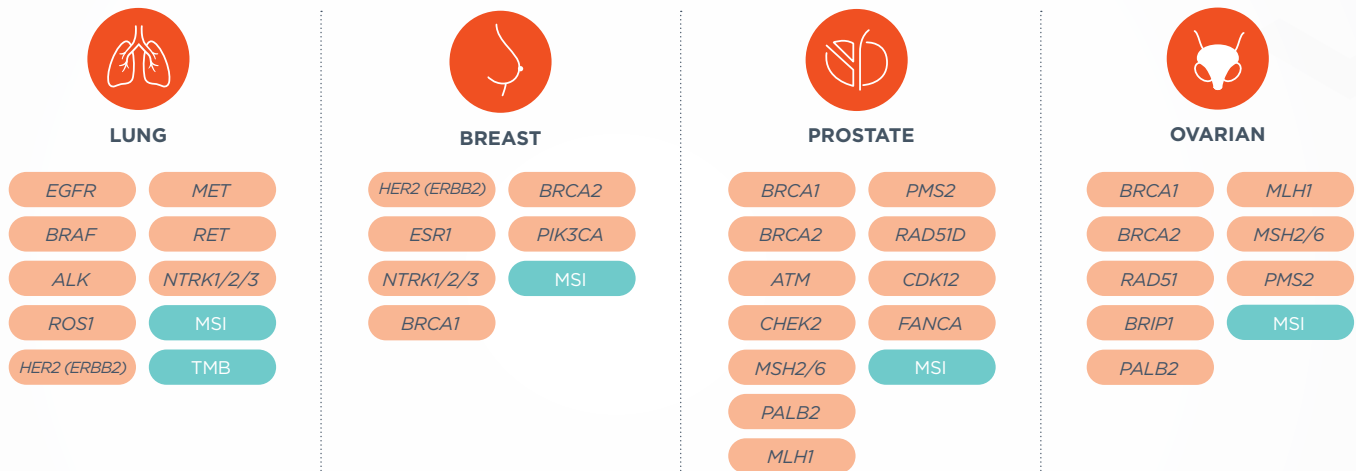
[§]75 genes are baited with enhanced sensitivity for all variant types (selected based on increased actionability with current or future targeted therapies; for more information of these 75 genes, please refer to our full gene list); other genomic regions are baited with high sensitivity.

[¶]Clinical validation based on evidence gathered using an earlier version of Foundation Medicine's current liquid biopsy service, FoundationOne Liquid CDx. For concordance results between these two tests, please see our full intended use at www.foundationmedicine.com/FILCDx.

Part of our proven portfolio of high-quality, FDA-approved comprehensive genomic profiling services for all solid tumours, supporting current and future personalised clinical and research decisions at optimal times beneficial to your patients' treatment journeys¹⁻⁵



Covers guideline-recommended, and other clinically relevant genomic alterations and signatures for NSCLC, breast, ovarian and prostate cancer, among other solid tumours^{2,3,12-31}



Professional guidelines support the use of liquid biopsy in a range of tumours including NSCLC and breast cancer^{13,15}

In Cancer of Unknown Primary and other rare cancers where diagnostic or treatment options are limited, FoundationOne Liquid CDx can offer insights into possible driver alterations and associated therapies.^{2,3,32}

For more information, please contact your local Roche representative

www.foundationmedicine.se | 08-726 11 00

Abbreviations

bTMB, blood Tumour Mutational Burden; CDx, companion diagnostic; cfdNA, circulating cell-free DNA; ctDNA, circulating tumour DNA; MSI, Microsatellite Instability; NSCLC, non-small cell lung cancer.

References

- FoundationOne Liquid CDx FDA Approval, 2020. Available at: <https://www.foundationmedicine.com/press-releases/445c1f9e-6cbb-488b-84ad-5f133612b721> (Accessed August 2020).
- Data on file: FoundationOne Liquid CDx Technical Specifications, 2020. Available at: <http://www.eifu.online/FMI/190070862> (Accessed August 2020).
- Data on file: Clinical and analytical validation data file for FoundationOne Liquid CDx.
- FoundationOne CDx FDA Approval, 2017. Available at: <https://www.fda.gov/medical-devices/recently-approved-devices/foundationone-cdx-p170019> (Accessed August 2020).
- FoundationOne CDx Technical Information, 2018. Available at: www.rochefoundationmedicine.com/flcdxtech (Accessed August 2020).
- Gadgeel SM *et al.* *Ann Oncol* 2019; 30: S5; v851-v934; presented at ESMO 2019.
- Lebel S *et al.* *J Psychosom Res* 2003; 55: 437-443.
- Hayes *et al.* *J Health Psychol* 2017; 22: 561-571.
- Francis G, Stein. *Int J Mol Sci* 2015; 16: 14122-14142.
- Siravegna G *et al.* *Ann Oncol* 2019; 30: 1580-1590.
- Data on file: FoundationOne Liquid CDx Specimen Instructions.
- Planchard D *et al.* *Ann Oncol* 2019; 30: 863D870.
- NCCN Clinical Practice Guidelines in Oncology. Non-Small Cell Lung Cancer. Version 6.2020, June 2020. Available at: https://www.nccn.org/professionals/physician_gls/pdf/nscl.pdf (Accessed August 2020).
- Cardoso F *et al.* *Ann Oncol* 2019; 30: 1194D1220.
- NCCN Clinical Practice Guidelines in Oncology. Breast Cancer. Version 5.2020, July 2020. Available at: https://www.nccn.org/professionals/physician_gls/pdf/breast.pdf (Accessed August 2020).
- NCCN Clinical Practice Guidelines in Oncology. Prostate Cancer. Version 2. 2020, May 2020. Available at: https://www.nccn.org/professionals/physician_gls/pdf/prostate.pdf (Accessed August 2020).
- Parker C *et al.* *Ann Oncol* 2020; 31: 1119-1134.
- NCCN Clinical Practice Guidelines in Oncology. Ovarian Cancer. Version 1.2020, March 2020. Available at: https://www.nccn.org/professionals/physician_gls/pdf/ovarian.pdf (Accessed August 2020).
- Colombo N *et al.* *Ann Oncol* 2019; 30: 672D705.
- Khagi Y *et al.* *Clin Cancer Res* 2017; 23: 5729-5736.
- Gandara DR *et al.* *Nat Med* 2018; 24: 1441-1448.
- Abida W *et al.* *JAMA Oncol* 2019; 5: 471-478.
- Mateo J *et al.* *Eur Urol* 2017; 71: 417-425.
- Socinski M. *Ann Oncol* 2019; 30: v851-v934.
- Kok M *et al.* ESMO Open 2019; 4(Suppl 2): e000511.
- Zhao P *et al.* *J Hematol Oncol* 2019; 12: 54.
- Pikora LA *et al.* *Lung Cancer* 2013; 82: 179-189.
- Tsao AS *et al.* *J Thorac Oncol* 2016; 11: 613-638.
- Sanchez-Vega F *et al.* *Cell* 2018; 173: 321-337.e10.
- Kroeger PT Jr. *et al.* *Curr Opin Obstet Gynecol* 2017; 29: 26-34.
- Amatu A *et al.* ESMO Open 2016; 1:e000023.
- Conway AM *et al.* *Br J Cancer* 2019; 120: 141-153.

Foundation Medicine® and FoundationOne® are registered trademarks of Foundation Medicine®, Inc. Roche is the licensed distributor of Foundation Medicine® products outside of the United States